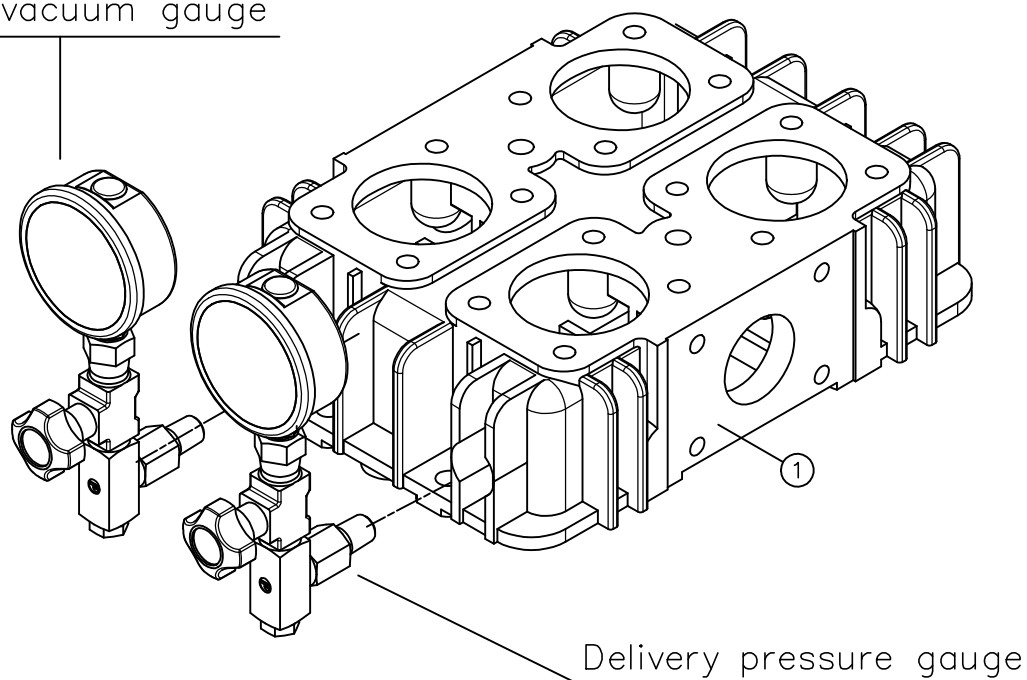


TIGHT COMPRESSOR MODEL A938

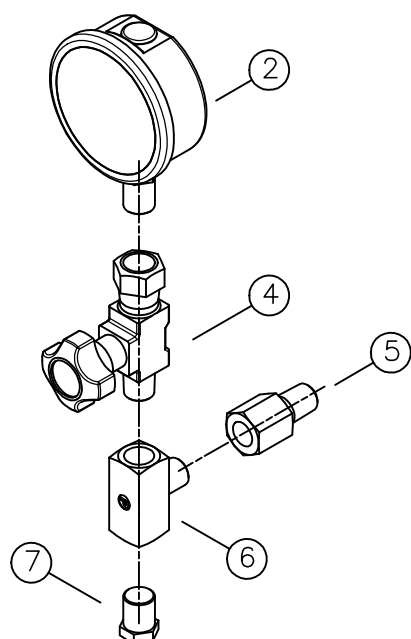
TIGHT A938 – DETAILS OF HEAD WITH GAUGES AND SUCTION & DELIVERY VALVES

Suction vacuum gauge

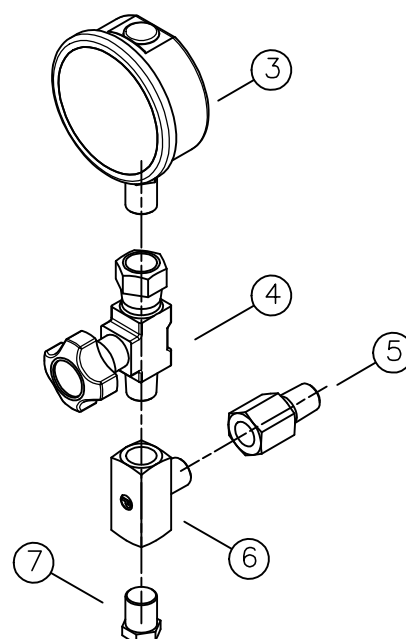


Rif. N°	CODE	Q.TY	DESCRIPTION
1	T26301	1	HEAD
2	T15418	1	VACUUM GAUGE Ø 63 -1/24 RADIAL 1/4" GLICERINE
3	D066008	1	PRESSURE GAUGE Ø 63 0/25 RADIAL 1/4" GLICERINE
4	D028002	2	VALVE GAUGE 1/4"
5	T15429	2	DAMPER
6	T15430	2	ADAPTOR " T " MFF 1/4"
7	C084031	2	MALE CAP S3000 NPT 1/4"

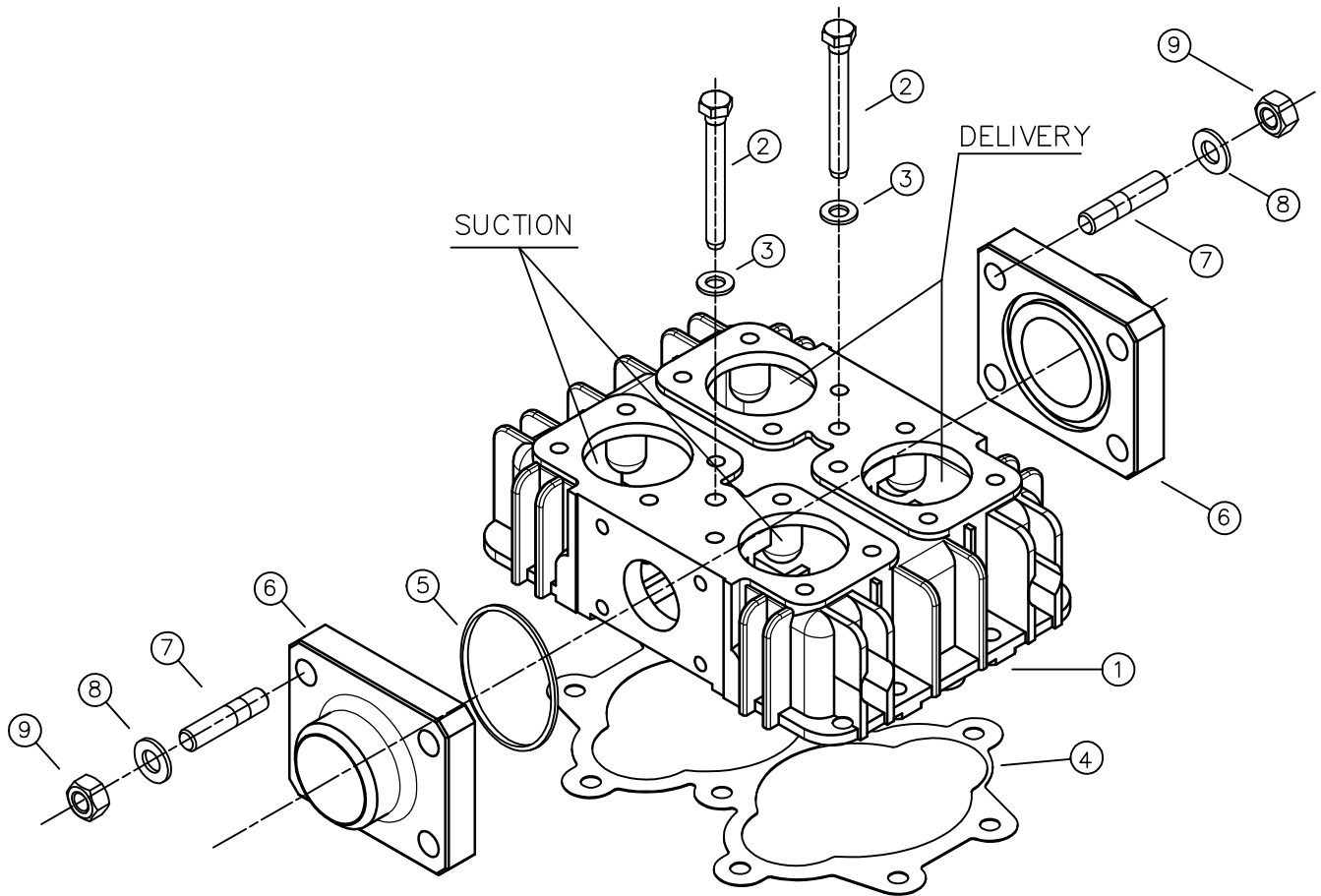
SUCTION VACUUM GAUGE



DELIVERY PRESSURE GAUGE

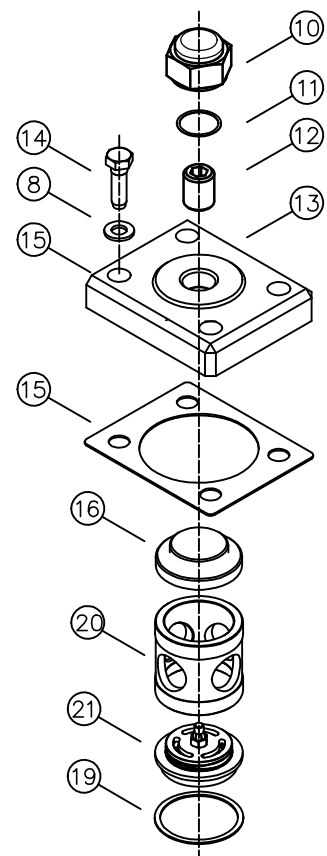
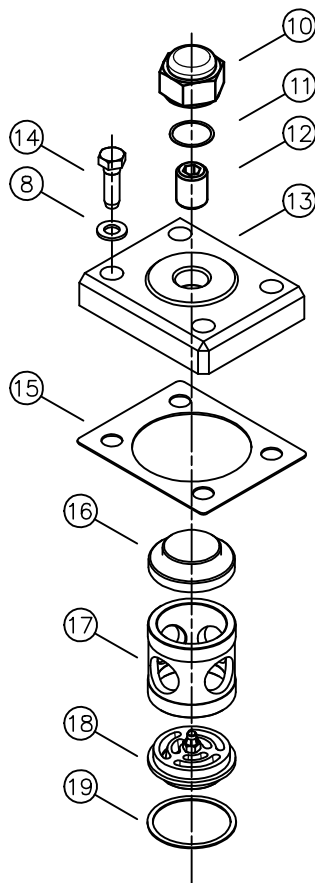


TIGHT A938 — DETAILS OF ASSEMBLY HEAD AND SUCTION & DELIVERY VALVES



SUCTION VALVE

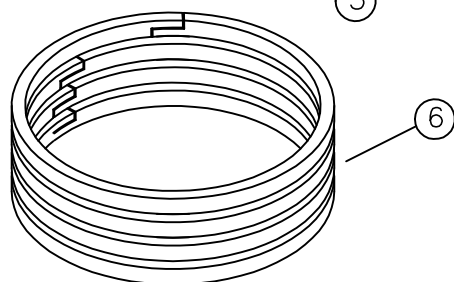
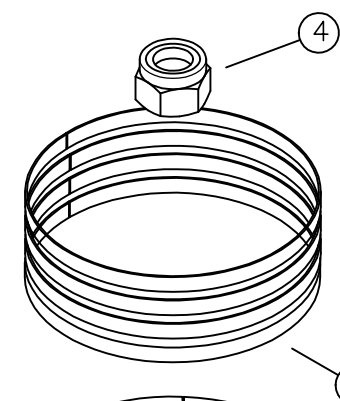
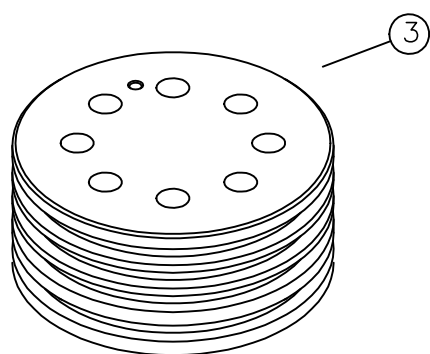
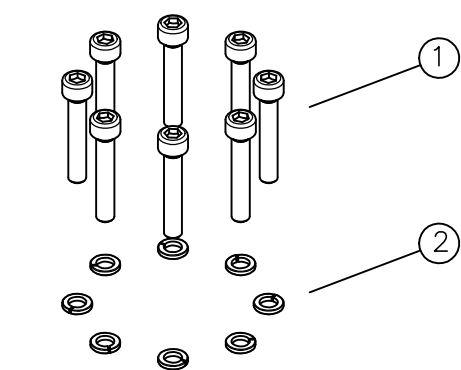
DELIVERY VALVE



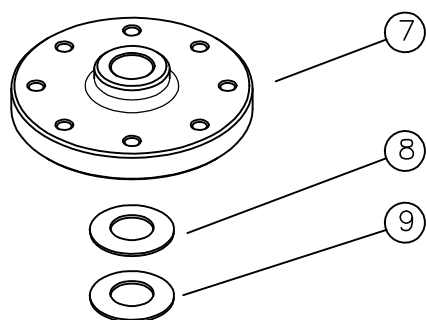
TIGHT A938 – DETAILS OF ASSEMBLY HEAD AND
SUCTION & DELIVERY VALVES

Rif. N°	CODE	Q.TY	DESCRIPTION
1	T26301A	1	HEAD
2	T26409	2	HEXAGONAL HEAD SCREW 10 x 90 cl. 10.9
3	T15409A	2	WASHER M10
4	T26351	1	HEAD GASKET
5	T26426	2	O-RING (VITON)
6	T26425	2	HEAD FLANGE
7	T26428	8	HEAD STUD BOLT M10x45
8	C091168	24	WASHER M10
9	C091165	8	NUT M10
10	T15318	4	VALVE SPACERCLAMPING NUT
11	T15399	4	WASHER ALUMINIUM FOR VALVE SPACER CLAMPING NUT
12	T15319	4	CLAMPING NUT FOR SUCTION & DELIVERY VALVES
13	T16316	4	VALVE CAP A938
14	T26408	16	HEXAGONAL HEAD SCREW 10X50 CL. 10.9
15	T16356	4	VALVE CAP GASKET SUCTION & DELIVERY
16	T18317	4	VALVE SPACER CAP SUCTION & DELIVERY
17	T16325	2	SUCTION VALVE UPPER BODY
18	TA16325	2	COMPLETE SUCTION VALVE A938
19	T16355	4	ALUMINIUM VALVE GASKET SUCTION & DELIVERY
20	T16330	2	DELIVERY VALVE UPPER BODY
21	TA16330	2	COMPLETE DELIVERY VALVE

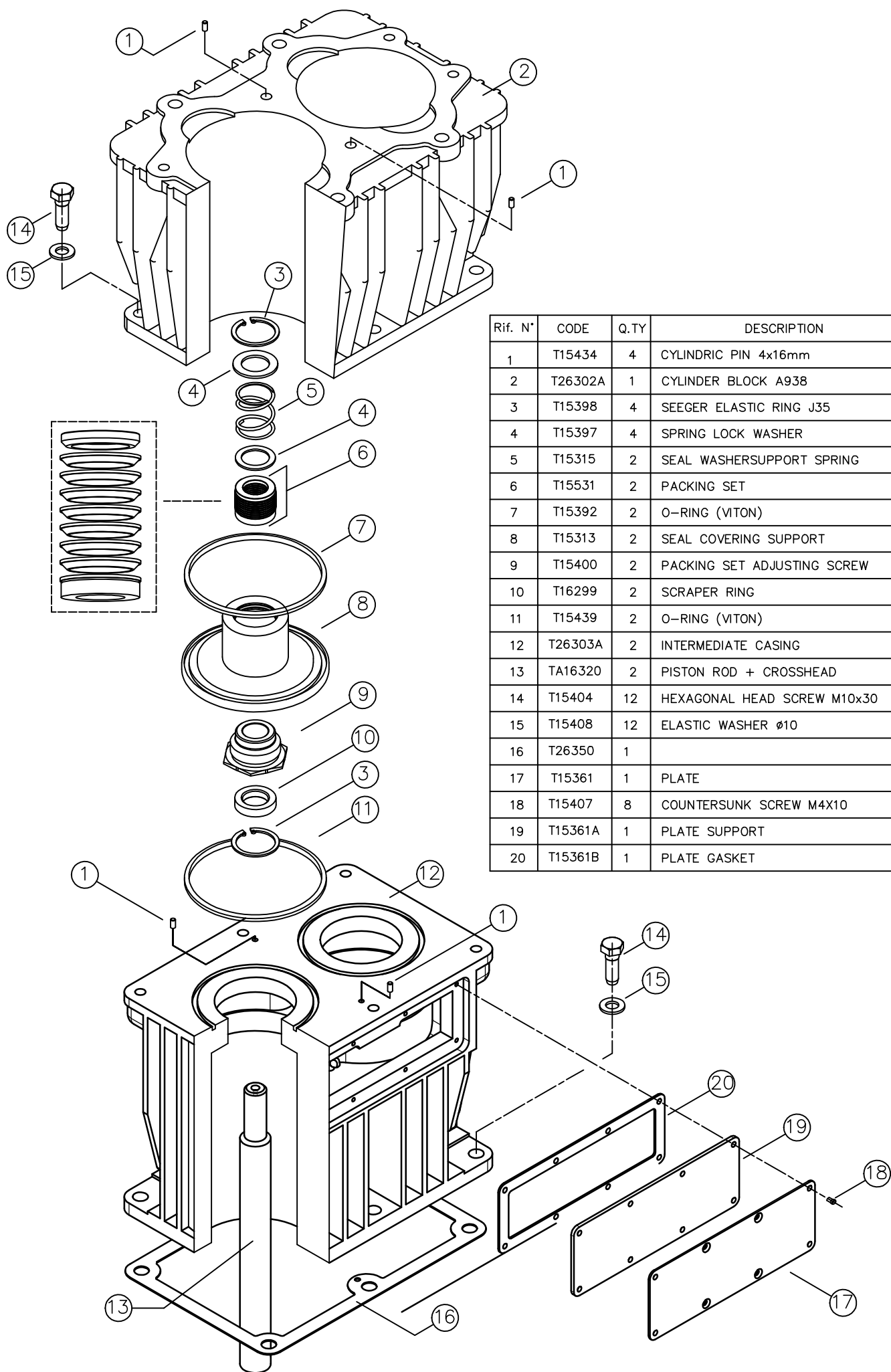
TIGHT A938 – PISTON ASSEMBLY DETAIL



Rif. N°	CODE	Q.TY	DESCRIPTION
1	T15384	16	PISTON HEAD SCREW M6x35
2	T15383	16	ELASTIC WASHER FOR PISTON SCREW
3	T26312	2	ALUMINIUM PISTON BODY
4	T15413	2	SELF -BLOCKING NUT M14
5	T26387	8	EXPANSION RING
6	T26386	8	ELASTIC BAND
7	T15311	2	PISTON CONNECTION FLANGE
8	T15389	2	WASHER 1mm THICK
9	T15388	2	WASHER 1,5mm THICK

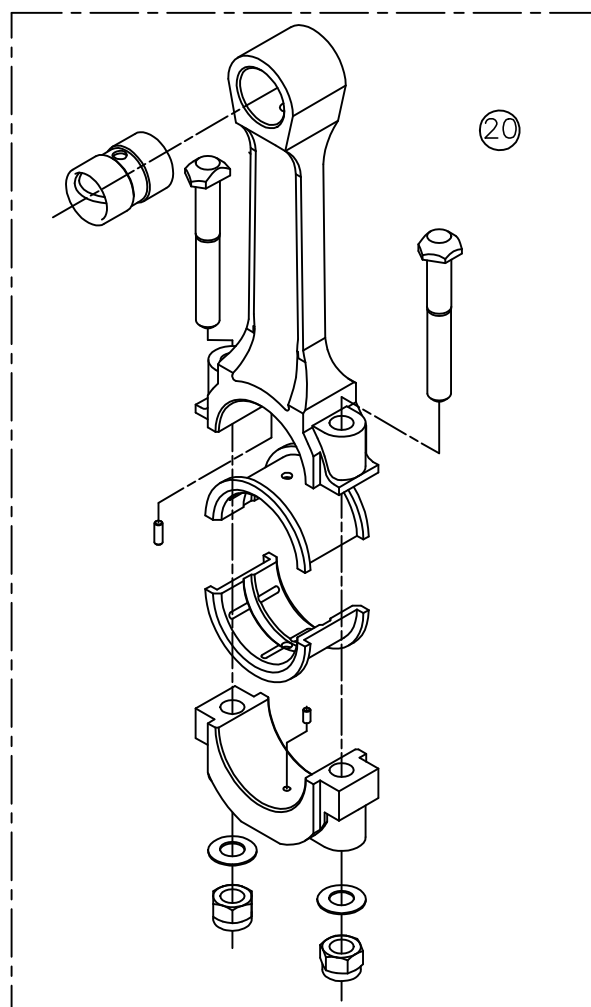
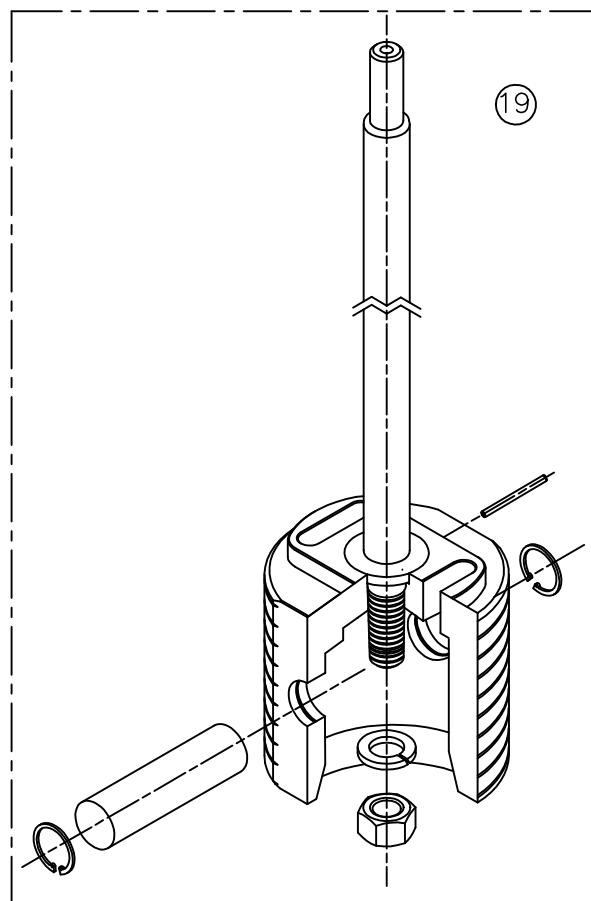
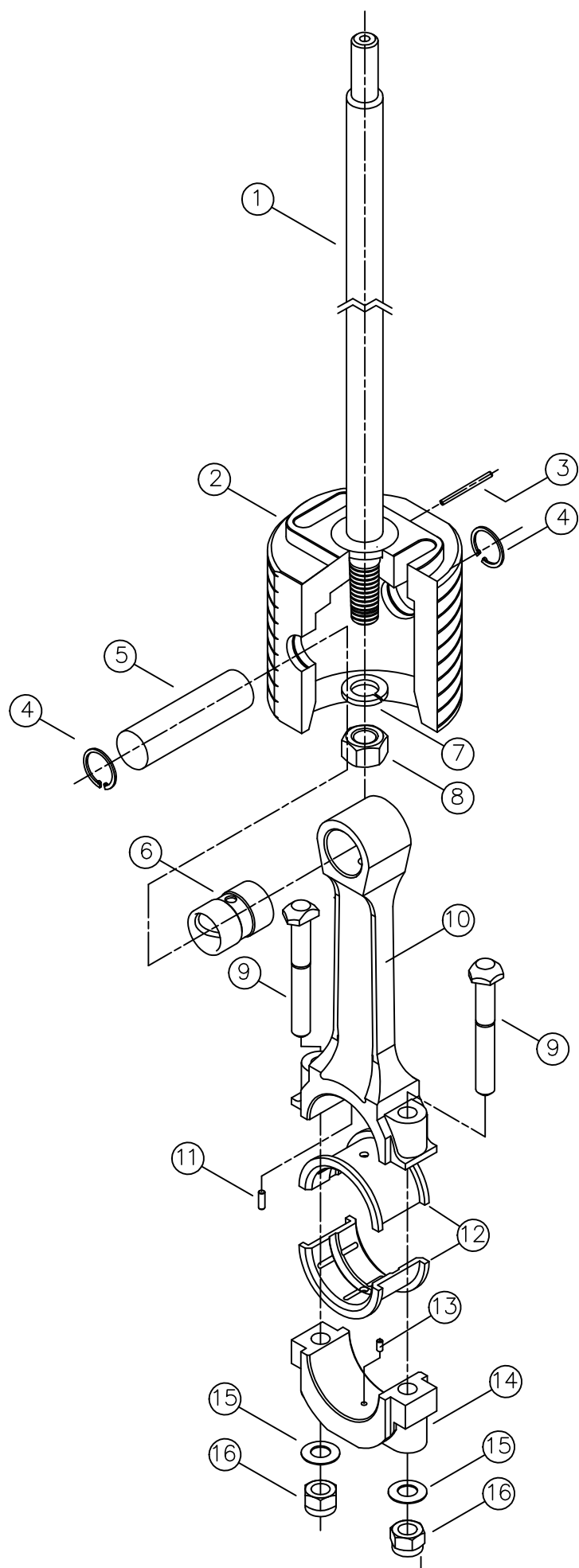


TIGHT A938 – ASSEMBLY DETAIL PACKING SET



Rif. N°	CODE	Q.TY	DESCRIPTION
1	T15434	4	CYLINDRIC PIN 4x16mm
2	T26302A	1	CYLINDER BLOCK A938
3	T15398	4	SEEGER ELASTIC RING J35
4	T15397	4	SPRING LOCK WASHER
5	T15315	2	SEAL WASHERSUPPORT SPRING
6	T15531	2	PACKING SET
7	T15392	2	O-RING (VITON)
8	T15313	2	SEAL COVERING SUPPORT
9	T15400	2	PACKING SET ADJUSTING SCREW
10	T16299	2	SCRAPER RING
11	T15439	2	O-RING (VITON)
12	T26303A	2	INTERMEDIATE CASING
13	TA16320	2	PISTON ROD + CROSSHEAD
14	T15404	12	HEXAGONAL HEAD SCREW M10x30
15	T15408	12	ELASTIC WASHER Ø10
16	T26350	1	
17	T15361	1	PLATE
18	T15407	8	COUNTERSUNK SCREW M4X10
19	T15361A	1	PLATE SUPPORT
20	T15361B	1	PLATE GASKET

TIGHT A938 – ASSEMBLY DETAIL PISTON ROD + CROSSHEAD



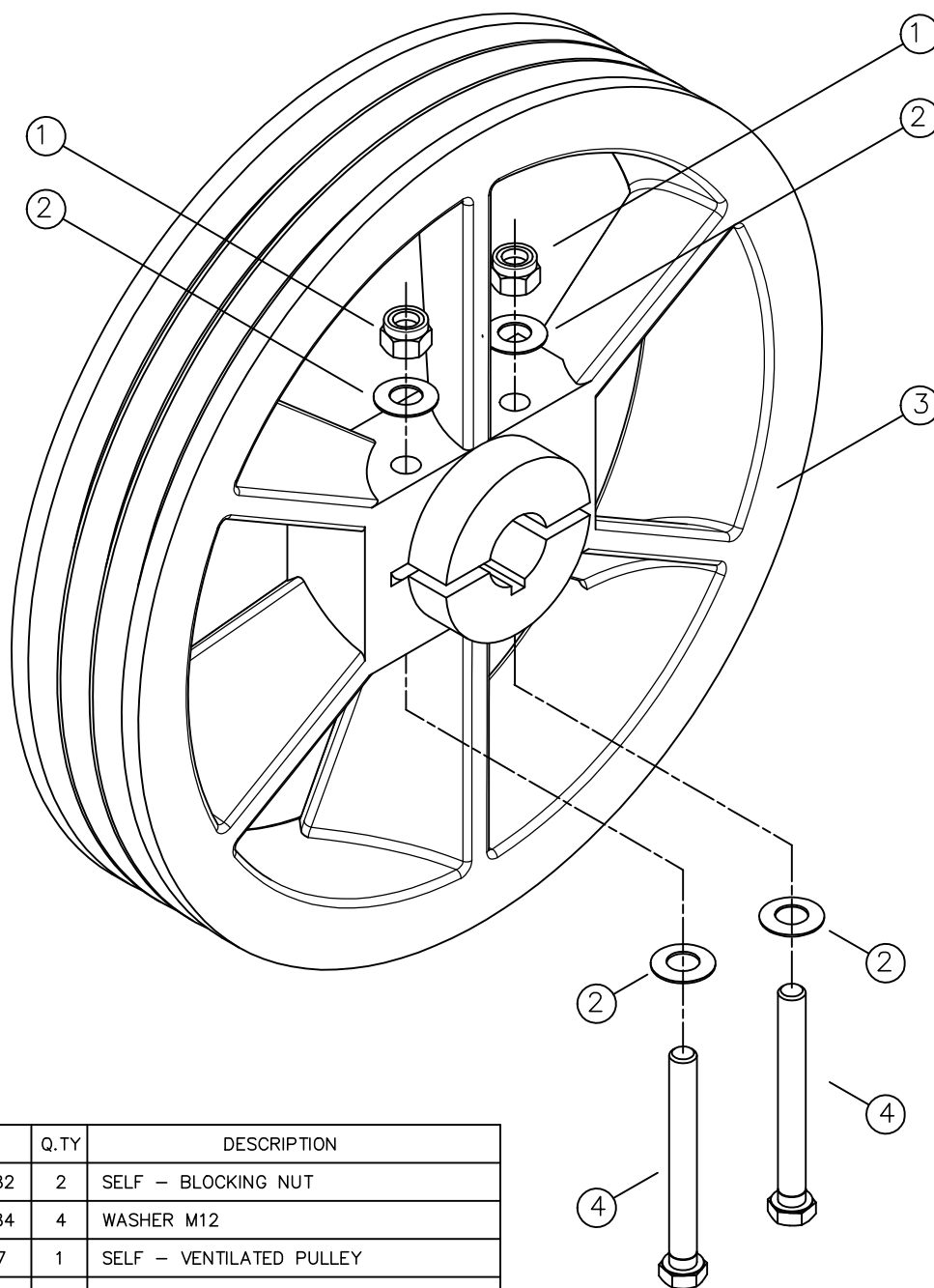
TIGHT A938 – ASSEMBLY DETAIL PISTON ROD + CROSSHEAD

Rif. N°	CODICE	Q.TA	DESCRIZIONE
1	T16320	2	PISTON ROD
2	T16324	2	PISTON ROD JOINT
3	T15381	2	PISTON ROD PIN
4	T15365	4	SEGER ELASTIC RING J22
5	T15309	2	JOINT PIN
6	T15364	2	CONNECTING ROD BEARING
7	T15395	2	PISTON ROD WASHER M14
8	T15436	2	NUT M14
9	T15323	4	CONNECTING ROD CLAMPING SCREW
10	T26307	2	CONNECTION ROD UPPER PART
11	T15431	2	DOWEL Ø 1.5
12	T26341	2	CONNECTING ROD BEARING
13	T15390	2	PIN
14	T26308	2	CONNECTING ROD SMALL END
15	T15408	4	ELASTIC WASHER Ø 10
16	T15412	4	SELF – LOCKING NUT

ASSEMBLY

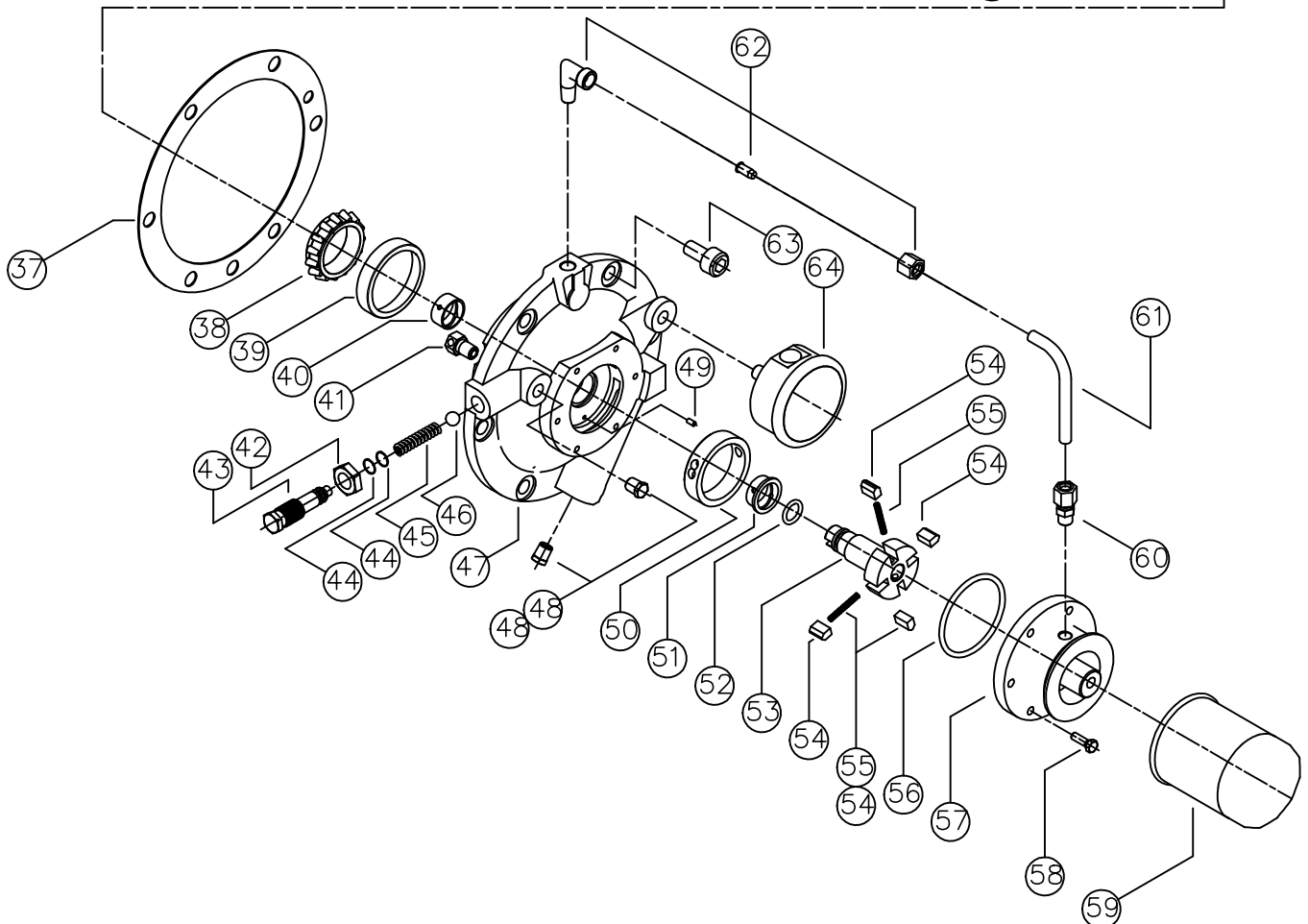
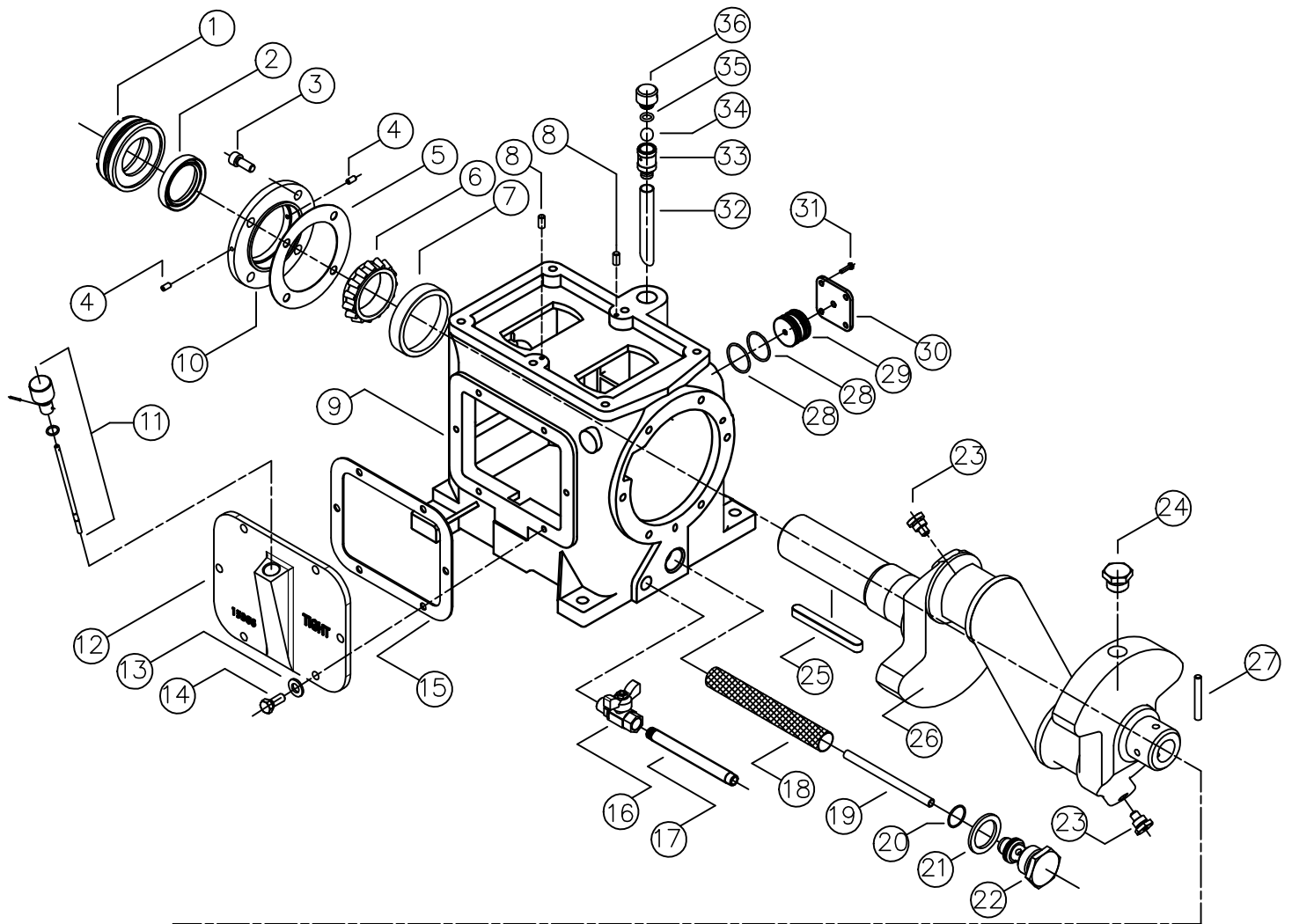
Rif. N°	CODE	Q.TY	DESCRIPTION	RIF. N° DETAILS ASSEMBLY
19	TA16320	2	PISTON ROD + CROSSHEAD	1, 2, 3, 4, 5, 7, 8
20	TA26307	2	CONNECTING ROD	6, 9, 10, 11, 12, 13, 14, 15, 16

TIGHT A938 – DETAIL ASSEMBLY PULLEY



Rif. N°	CODE	Q.TY	DESCRIPTION
1	C091182	2	SELF – BLOCKING NUT
2	C091184	4	WASHER M12
3	T26367	1	SELF – VENTILATED PULLEY
4	C091194	2	HEZAGONAL HEAD SCREW M12 x 120

TIGHT A938 – MAIN CASING ASSEMBLY DETAILS



TIGHT A938 – MAIN CASING ASSEMBLY DETAILS

Rif. N°	CODE	Q.TY	DESCRIPTION
1	T26354	1	CALIBRATION BEARING RING NUT
2	T26423	1	CRANK SHAFT OIL SEAL
3	T15402	4	SOLKET HEAD SCREW M8x20mm
4	T15425	2	SECURITY DOWER FOR CALIBRATION RING NUT
5	T26360A	1	GASKET
6	T26373	1	PULLEY SIDE INNER BEARING
7	T26372	1	PULLEY SIDE OUTER BEARING
8	T15434	2	CYLINDER PIN 4x16mm
9	TA26304	1	MAIN CASING
10	T26360	1	BEARING RING NUT CUP
11	TA15362	1	OIL LEVEL ROAD
12	TA15366	1	INSPECTION PLATE
13	C091152	6	WASHER M8
14	C091155	6	SCREW M8x20mm
15	T15352	1	INSPECTION PLATE GASKET
16	D064066	1	BALL VALVE 3/8 MF
17	T15419	1	OIL DISCHARGE PIPE
18	T15345	1	OIL FILTER NET
19	T15421	1	OIL SUCTION HOSE
20	T15420	1	O-RING FOR OIL SUCTION FILTER
21	T15347	1	WASHER FOR OIL PUMP FILTER
22	T15346	1	HEXAGONAL CAP FOR OIL PUMP FILTER
23	T15321	2	CRANK SHAFT ORIFICE CAP
24	T15322	1	CRANKSHAFT CAP
25	T15359	1	PULLEY KEY
26	T26305	1	CRANKSHAFT
27	T15377	1	ELASTIC PIN
28	T15428	2	O-RING FOR OIL LABYRINTH
29	T15335	1	OIL CIRCUIT LABYRINTH
30	T15334	1	OIL CIRCUIT LABYRINTH CAP

TIGHT A938 – MAIN CASING ASSEMBLY DETAILS

Rif. N°	CODE	Q.TY	DESCRIPTION
31	T15401	5	HEXAGONAL HEAD SCREW M6x10mm
32	T15340	1	OIL VAPOUR DRAIN
33	T15339	1	OIL VAPOUR DISCHARGE VALVE
34	T15376	1	NYLON BALL FOR OIL VAPOUR DRAIN
35	T15363	1	O–RING FOR DRAIN CAP
36	T15342	1	OIL VAPOUR DRAIN CAP
37	T15349	1	OIL PUMP GASKET
38	T15371	1	PULLEY SIDE INNER BEARING
39	T15370	1	PULLEY SIDE OUTER BEARING
40	T15382A	1	OIL PUMP SHAFT BUSHING
41	T15427	1	1/8" NPT CAP
42	T15378	1	OIL PUMP CALIBRATION LOCK NUT
43	T15343	1	CALIBRATION SCREW FOR OIL PUMP
44	T15348	2	O–RING FOR OIL PUMP CALIBRATION VALVE
45	T15344	1	CALIBRATION SPRING FOR OIL PUMP VALVE
46	T15375	1	OIL PUMP CALIBRATION VALVE
47	T26306	1	OIL PUMP BODY
48	T15429	2	DAMPER
49	T15377	1	OIL PUMP ROTOR SHSFT ELASTIC PIN
50	T15379	1	OIL PUMP CAM
51	T15382B	1	OIL PUMP SHAFT BUSCHING
52	T15369	1	O–RING FOR OIL PUMP ROTOR
53	T15336	1	OIL PUMP ROTOR
54	T15336	4	OIL PUMP SECTORS
55	T15338	2	OIL PUMP SECTORS SPRING
56	T15357	1	O–RING FOR OIL FILTER SUPPORT
57	T14005	1	OIL FILTER SUPPORT
58	T15405	6	HEXAGONAL HEAD SCREW M5x16mm
59	T14000	1	OIL FILTER CARTRIDGE
60	C085101	1	STRAIGHT CONNECTION M 1/8" – 8

TIGHT A938 – MAIN CASING ASSEMBLY DETAILS

Rif. N°	CODE	Q.TY	DESCRIPTION
61	C074502	1	COPER HOSE 8x6
62	C085106	1	CONNECTION 90° M 1/8" – 8
63	T15435	6	SOKET HEAD SCREW M10x25mm
64	T15368	1	OIL PRESSURE GAUGE ø63 – 2.5 bar BACK 1/8" NPT

ASSEMBLY

Rif. N°	CODE	Q.TY	DESCRIPTION	RIF. N° DETAILS ASSEMBLY
1	TA26306	1	COMPLETE OIL PUMP	39, 40, 41, 42, 43, 44, 45, 46, 47, 48, 49, 50, 51, 52, 53, 54, 55, 56, 57, 58, 59, 60, 61, 62, 63
2	T26305A	1	CRANCK SHAFT ASSEMBLY	06, 07, 23, 24, 26, 27, 38, 39
3	TA15346	1	FILTRO POMPA OLIO ASSEMBLATO	18, 19, 20, 21, 22