

#### GENERAL DESCRIPTION / APPLICATIONS



Two way direct acting solenoid valve with spring return.

Suitable for gaseous and liquid media compatible with the (body/seals) material used, vacuum.

Forged brass, nickel-plated brass or stainless steel body.

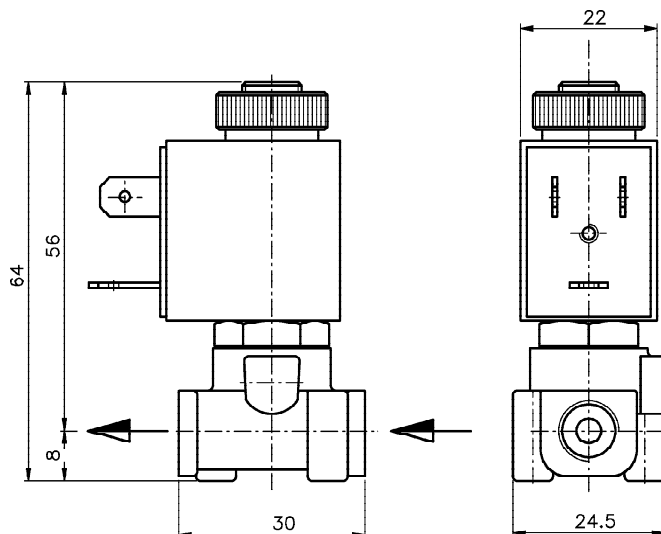
Stainless steel internal parts.

Stainless steel springs.

360° degrees orientable solenoid.

Mountable in any position.

#### DIMENSIONS (in mm)



#### ELECTRICAL INFORMATION

Continuous duty glass-reinforced nylon moulded coil with electrical connection suitable for DIN-43650B plug (2 poles+ground) or "faston" wire terminal.

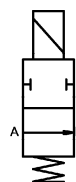
Coil type : B1  
Insulation class: F (155°C) - H (180°C) upon request.  
Winding wire class: H (180°C)  
Protection class: Waterproof IP-65 (EN60529 standards) when properly connected with DIN-43650B plug.  
Duty: Continuous (S.I.) 100% ED  
Power consumption: Alternate Current 8VA (inrush 12VA)  
Direct Current 6W  
Voltage tolerance: ± 10%  
Electrical Insulation: >500 MOhm  
Dielectrical Strength: >2000 V/1"  
Standard voltages: 12, 24, 48, 110, 115, 125, 220, 240 Volt  
DC= 0 AC~(50/60Hz): other voltages available upon request.

#### OPERATION



L00 - Normally closed.

In: A  
Out: B  
Coil de-energized: A and B closed.  
Coil energized: from A to B.



L01 - Normally open.

In: A  
Out: B  
Coil de-energized: from A to B.  
Coil energized: A and B closed.

#### SPECIFICATIONS AND AVAILABLE OPTIONS

MODEL						ORIFICE DIAMETER mm	PRESSURES IN BAR						Flow factor kv (liters/min.')	WEIGHT Kg.	
							BODY RATING	MIN./MAX. OPERATING DIFFERENTIAL PRESSURE							
<i>Replace with L01 for N.O. model</i>								MIN.	MAX. NORM. CLOSED AC~      DC=		MAX. NORM. OPEN AC~      DC=				
L	0	0		a			1,5	16	0	10	10	10	10	1	0,3
								90							
								90							
								90							

a	Body material	b	Port size	c	Seals material	d	Protection class	e	Optional feature
T	Brass.	A	1/8" GAS	0	Buna N	P	IP 65	X	Stable manual operator.
N	Nickel-plated brass.			1	FPM				
				6	EPDM				
							when properly plug connected with DIN-43650B plug.		Option available only for NC models.