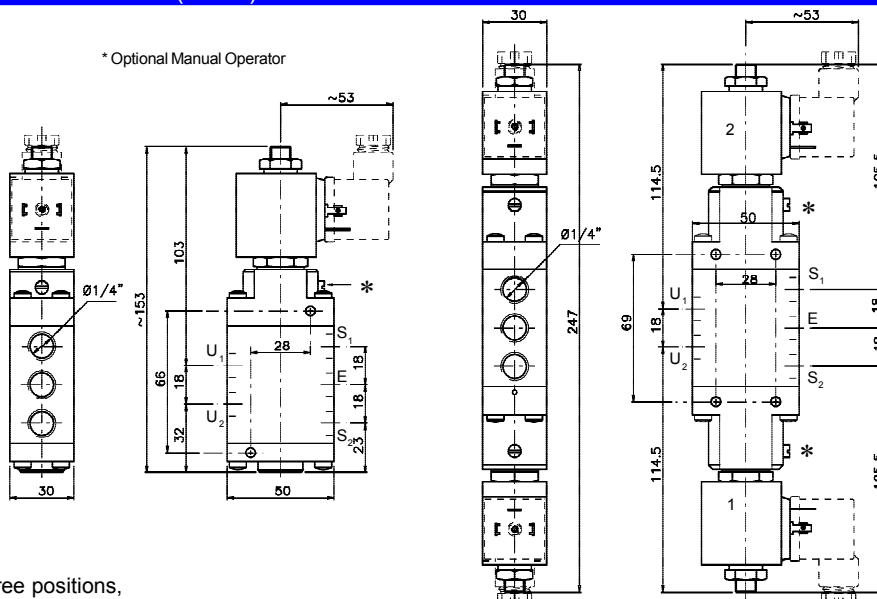


### GENERAL DESCRIPTION / APPLICATIONS / DIMENSIONS (in mm)



\* Optional Manual Operator



Five way solenoid valve, pilot operated, two and three positions, monostable or bistable.

Suitable for gaseous media. Model for liquid media<sup>(2)</sup> available upon request.

Stainless steel internal parts. Stainless steel spring.

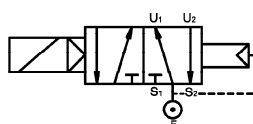
Stainless steel internal parts. Stainless steel springs. 360° degrees orientable solenoid. Mountable in any position.

### ELECTRICAL SPECIFICATIONS

Glass-reinforced nylon moulded coil with electrical connection suitable for DIN-43650A plug (2 poles+ground) or "faston" wire terminal.

Coil type: B2  
Insulation class: F (155°C) - H (180°C) upon request.  
Winding wire class: H (180°C)  
Protection degree: IP-65 (EN60529 standards) when properly plug connected with DIN-43650A plug.  
Duty: 100% ED  
Power consumption<sub>(1)</sub>: Alternate current 10VA (inrush 20VA)  
Direct current 8W  
Voltage tolerance: ± 10%  
Insulation: >1000 MOhm  
Dielectrical Strength: >2000 V/1'  
Standard voltages: 12, 24, 48, 110, 115, 125, 220, 240 Volt  
DC= o AC~(50/60Hz): other voltages available upon request.

### OPERATION



#### D02.P - Single solenoid Monostable

In: E  
Coil de-energized: from E to U1.  
from U2 to S2.  
Coil energized: from E to U2.  
from U1 to S1.

#### D04.P - Double solenoid Bistable

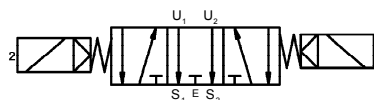
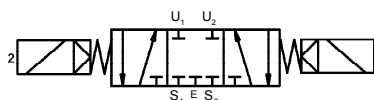
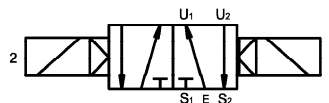
In: E  
Coil 1 energized: from E to U1.  
from U2 to S2.  
Coil 2 energized: from E to U2  
from U1 to S1  
Coils de-energized: Latched on the last position.

#### D06.P - Double solenoid Bistable, closed centers.

In: E  
Coil 1 energized: from E to U1.  
from U2 to S2.  
Coil 2 energized: from E to U2  
from U1 to S1  
Coils de-energized: E, U1, U2, S1, S2 closed

#### D08.P - Double solenoid Bistable, open centers.

In: E  
Coil 1 energized: from E to U1.  
from U2 to S2.  
Coil 2 energized: from E to U2  
from U1 to S1  
Coils de-energized: E closed  
from U1 to S1  
from U2 to S2



### SPECIFICATIONS AND AVAILABLE OPTIONS

MODEL					ORIFICE DIAMETER	PRESSURES IN BAR <sub>(1)</sub>				Flow factor kv (liters/min.')	WEIGHT Kg.	
						BODY RATING	MIN./MAX. OPERATING DIFFERENTIAL PRESSURE					
a	b	c	d	e			mm	MIN.	MAX. AC~			MAX. DC=
D 0 2	7	0		P		7	10	3	10	10	12.5	1.2
D 0 4	7	0		P		7	10	3	10	10	12.5	1.5
D 0 6	7	0		P		7	10	3	10	10	12.5	1.5
D 0 8	7	0		P		7	10	3	10	10	12.5	1.5

suffix (options available upon request): <sup>(1)</sup> "AP" (high pressure version), <sup>(2)</sup> "H2O" (water duty version)

a	Body material	b	Port size	c	Seals materials	d	Protection class	e	Optional features
T	Brass.	C	1/4" GAS	0	Buna N	P	IP 65	X	Stable
N	Nickel-plated brass.	D	1/4" NPT	1	FPM				Manual
I	Stainless steel.			7	HNBR				operator.

when properly plug connected with DIN-43650A plug.

Le caratteristiche possono subire variazioni senza preavviso / Characteristics may change without notice.