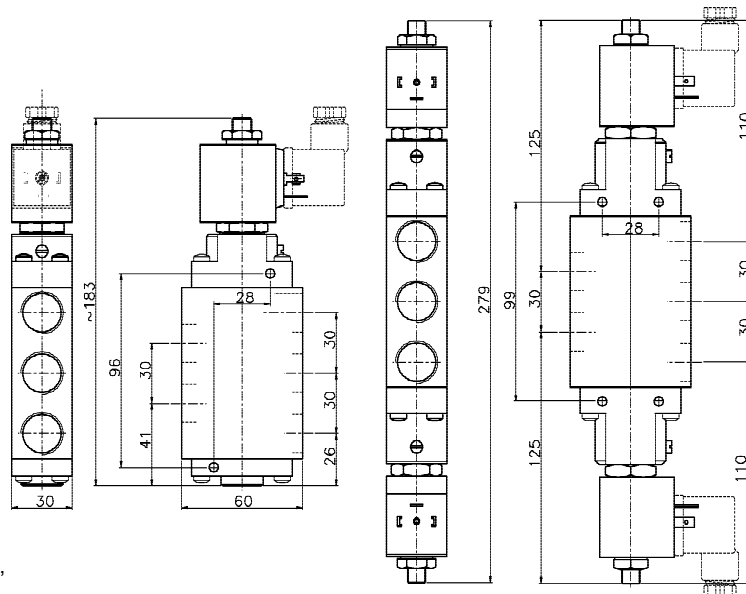


GENERAL DESCRIPTION / APPLICATIONS / DIMENSIONS (in mm)



Five way solenoid valve, pilot operated, two and three positions, monostabile or bistabile.

Suitable for gaseous media. Model for liquid media⁽¹⁾ available upon request.

Stainless steel internal parts. Stainless steel spring.

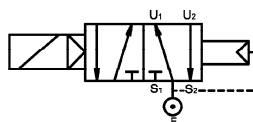
360° degrees orientable solenoid. Mountable in any position.

ELECTRICAL SPECIFICATIONS

Glass-reinforced nylon moulded coil with electrical connection suitable for DIN-43650B plug (2 poles+ground) or "faston" wire terminal.

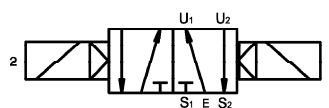
Nadi type: B2
Insulation class: F (155°C) - H (180°C) upon request.
Winding wire class: H (180°C)
Protection degree: IP-65 (EN60529 standards) when properly plug connected with DIN-43650B plug.
Duty: 100% ED
Power consumption: Alternate current 10VA (inrush 20VA)
Direct current 8W
Voltage tolerance: ± 10%
Insulation: >1000 MOhm
Dielectrical Strength: >2000 V/1'
Standard voltages: 12, 24, 48, 110, 115, 125, 220, 240 Volt
DC= o AC~(50/60Hz): other voltages available upon request.

OPERATION



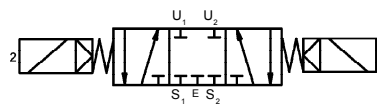
D12.P - Single solenoid Monostable

In: E
Coil de-energized: from E to U1.
from U2 to S2.
Coil energized: from E to U2.
from U1 to S1.



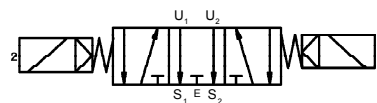
D14.P - Double solenoid Bistable

In: E
Coil 1 energized: from E to U1.
from U2 to S2.
Coil 2 energized: from E to U2.
from U1 to S1
Coils de-energized: Latched on the last position.



D16.P - Double solenoid Bistable, closed centers.

In: E
Coil 1 energized: from E to U1.
from U2 to S2.
Coil 2 energized: from E to U2.
from U1 to S1
Coils de-energized: E, U1, U2, S1, S2 closed



D18.P - Double solenoid Bistable, open centers.

In: E
Coil 1 energized: from E to U1.
from U2 to S2.
Coil 2 energized: from E to U2.
from U1 to S1
Coils de-energized: from U1 to S1
from U2 to S2

SPECIFICATIONS AND AVAILABLE OPTIONS

MODEL					ORIFICE DIAMETER	PRESSURES IN BAR ₍₁₎				Flow factor kv (liters/min.')	WEIGHT Kg.
						BODY RATING	MIN./MAX. OPERATING DIFFERENTIAL PRESSURE				
a	b	c	d	e	mm		MIN.	MAX. AC~	MAX. DC=		
D 1 2	1 1			P		11	10	10	10	30	1.8
D 1 4	1 1			P		11	10	10	10	30	2.2
D 1 6	1 1			P		11	10	10	10	30	2.2
D 1 8	1 1			P		11	10	10	10	30	2.2

suffix (options available upon request): ⁽¹⁾ "AP" (high pressure version), ⁽²⁾ "H20" (water duty version)

a	b	c	d	e
Body material	Port size	Seals material	Protection class	Optional features
T Brass. N Nickel-plated brass. I Stainless steel.	F 1/2" GAS G 1/2" NPT	0 Buna N 1 FPM 7 HNBR	P IP 65 when properly plug connected with DIN-43650B plug.	X Stable Manual operator.

Le caratteristiche possono subire variazioni senza preavviso / Characteristics may change without notice.