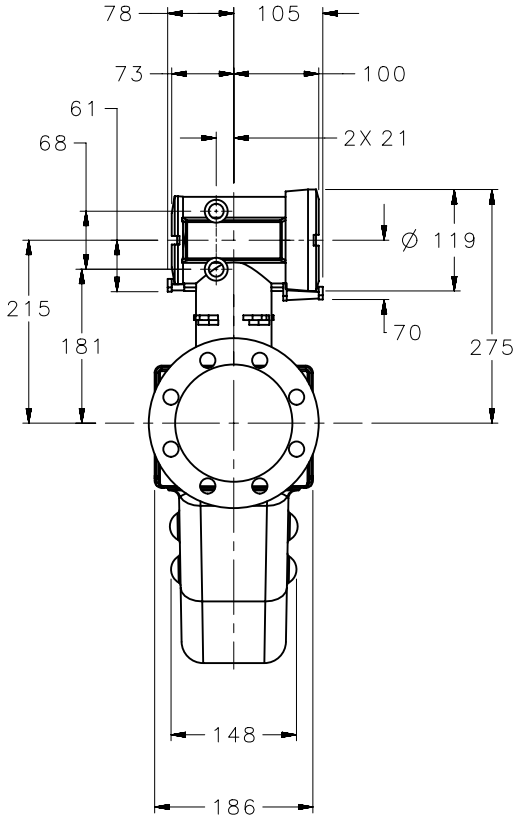
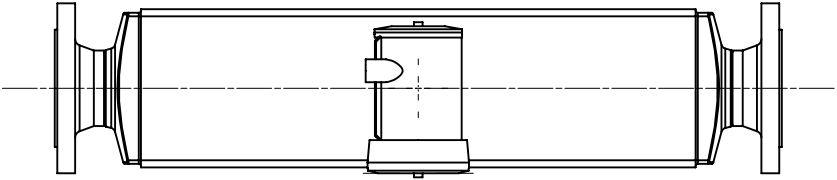
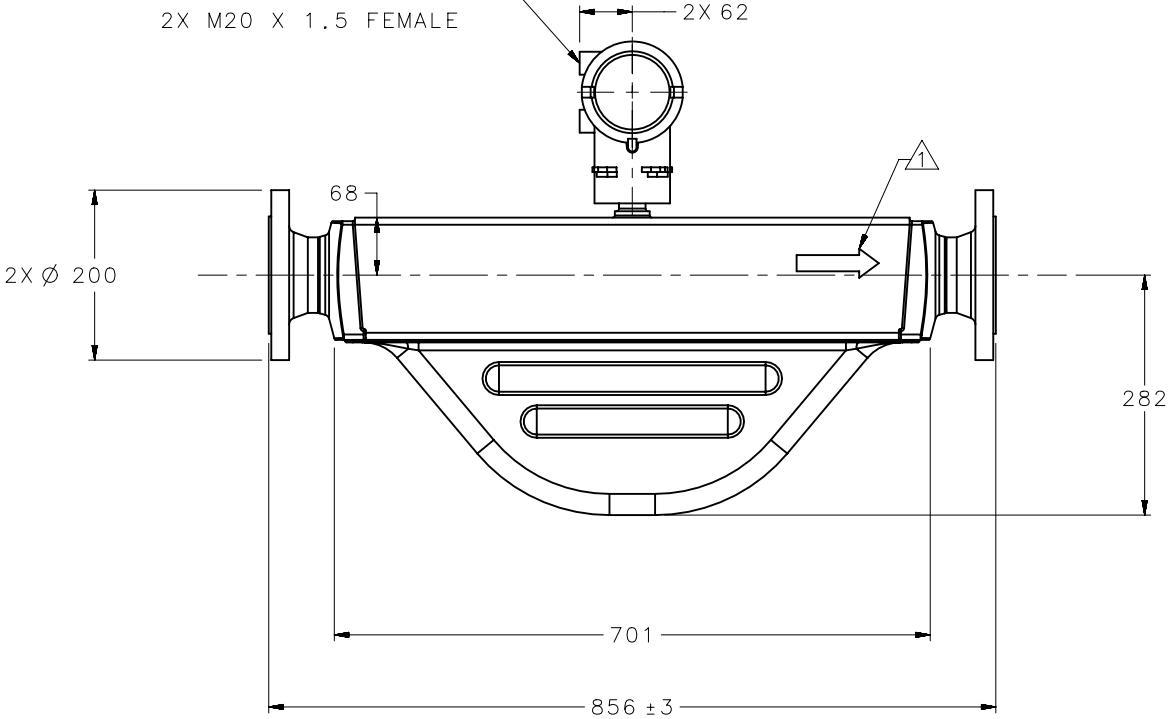


1 THE ARROW, MARKED ON SENSOR EXTERIOR INDICATES NORMAL FLOW DIRECTION.THE TRANSMITTER CAN BE CONFIGURED FOR NORMAL (FORWARD), REVERSED OR BI-DIRECTIONAL FLOW.



2X 1/2-14 NPT FEMALE
OR
2X M20 X 1.5 FEMALE



F O R I N F O R M A T I O N O N L Y

MODEL:
F300S371ECFZEZZZZ
2700I15AFFEZWZ

DRAWN BY: PRG
REV:
DATE: APRIL 12, 2019
DIMENSIONS ARE IN
METRIC
DO NOT SCALE DRAWING

MATERIALS (WHERE APPLICABLE):
FLANGE: EN 1092-1 DN80 PN40 TYPE B1 F316/F316L
SENSOR: 316L / CF-3M STAINLESS STEEL; SENSOR CASE: 304L STAINLESS STEEL
ENCLOSURE: MVD; POLYURETHANE PAINTED ALUMINIUM
ALLOWS FULL 360° ROTATION IN 90° INCREMENTS TO ORIENT WIRING CONDUIT OPENING
WEIGHT: 49 KG

ADDITIONAL NOTES:



MICRO MOTION DIMENSIONAL DRAWING
© Micro Motion / Emerson Process Management
For more information obtain a Product Data Sheet or Installation Manual at www.emersonprocess.com